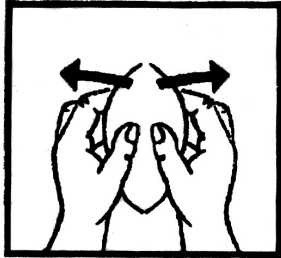


Wearing a face mask



Flu viruses are primarily passed on through droplets, which is why respiratory protection is particularly important. Masks should prevent the virus from entering the body via the mucous membranes of the nose and mouth.

© MSA

Using respiratory masks

- Please wear a mask when you come into contact with other people
- Only use masks which you have inspected and which appear to be intact
- Attach the mask using the elastic loops and secure the nose piece tightly over the bridge of the nose
- Do not wear the mask for more than four hours - it is better to wear it for two hours in case you have to wear it frequently or repeatedly
- Replace masks which have become thoroughly moistened as they will no longer be effective
- Masks may have to be re-used if there are insufficient masks in stock or if new masks become unobtainable
- Masks may only be re-used by the same person
- Please dispose of used masks in the waste receptacles designated for the purpose